

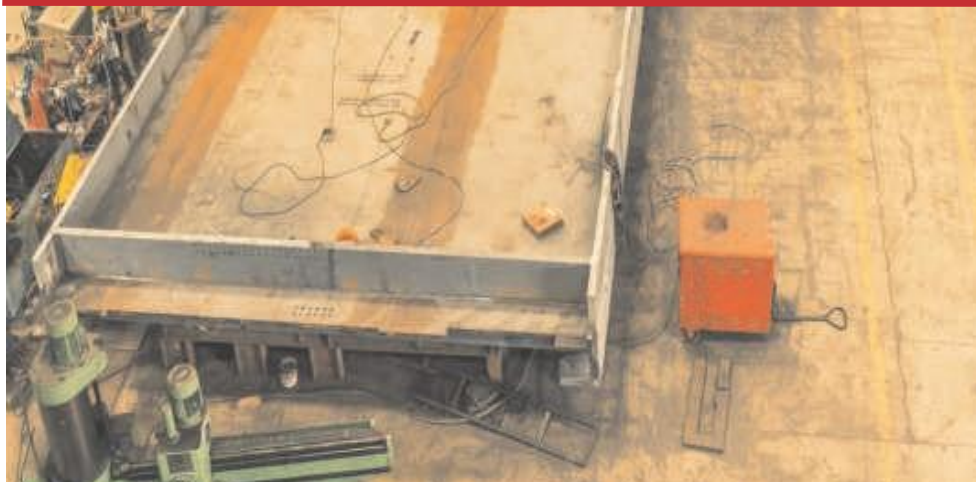


Pratibha Pipes & Structural Limited (PPSL) is a decade and a half old company specialised in mechanical aspect of engineering, which includes number of sectors such as power plants, refineries, high end composite high rises, oil & gas, water, dredging etc. to name a few. The company has executed various prestigious projects on its name in commercial complexes, modern railway stations and airport terminal buildings. It effectively delivers diversified product range consisting of custom built structures including design, detailing, and fabrication and erection of complex to common steel structures. Considered as one of the leading structural steel companies, it has truly revolutionized the Indian structural steel construction.

It has formed strategic joint ventures with construction majors for executing key projects, applying time and cost saving technologies, whilst keeping in view very specific need of each project, and has continuously adapted to the rapid changes and challenges by making use of latest developments. The landmark projects constructed by the company provide eloquent evidence of its versatile capabilities and unflinching commitment to the client's requirements, invariably including the deadlines, which might otherwise seem difficult.

Revolutionizing Structural Steel Construction

PPSL's plant an eloquent evidence of versatile capabilities



Certifications

PPSL is an IS: 9001-2000 company with certification from IS and American Petroleum Institute. The company has been manufacturing products under the inspection of various leading third party inspection agencies viz. LRIS, SGS (India), EIL, BVIS, PDIL, DNV etc. It also has a mobile plant facility to take care of site fabrication activities. Recently, it was registered with the 'Research Design and Standards Organization' (RDSO) for Railway projects.

Landmark Projects

PPSL provides innovative engineering solutions with international quality standards using Tekla Detailing Systems for any type of complex and complicated steel construction projects. The trained and highly skilled erection team, with best safety and erection practices, ensure on time completion of the projects. Some of the landmark projects which have been completed/ongoing fabrication



Vinayak Kulkarni, Chairman, Pratibha Pipes & Structures Ltd

“ PPSL has supplied more than 150,000 metric tons of pipes in diameters ranging from 400-3500 mm in thicknesses upto and including 36 mm. The company maintains and operates a separate fleet of equipment's and trained manpower manufacture large diameter pipes at project site. The strong expertise enables our construction division to execute complex projects involving structural steel.

”

and erection under various categories are mentioned as below:

- ↳ Doosan Chennai Works Pvt. Ltd. - 3 X 800 MW Kudgi Super Thermal Power Project
- ↳ L&T-MHI Boiler Pvt. Ltd. - 2x660MW Super Critical Thermal Power Plant Project, Nigrie, MP
- ↳ Mumbai Cricket Association - Cricket Stadium in Pune
- ↳ Commercial Green Building BKC - Mumbai
- ↳ Launching Truss - Bandra Worli Sea Link Project
- ↳ CDU & VDU Structures - Refineries
- ↳ Heater Convector units of Refineries - Technip
- ↳ Dome Roof Structure of Terminal 1B - CSI International Airport, Mumbai International Airport
- ↳ Airport Structures - Ahmedabad, Amritsar, Delhi Airport
- ↳ Barges, floating pontoons - Dredging sector

PPSL has fabricated and erected more than 10,000 MT of structural steel for coffer dams and pile casing pipes for Hindustan Construction Company. Their clientele also include Saipem Italy, Technip KT India, BHEL, Alstom, BGE Energy, Ansaldo Caladaie, SPMG International, Qatar Dredging Company, Vanoord Shipping, L&T-MHI to name a few.

State-of-the-art Equipments

PPSL has state-of-the-art manufacturing facility at Wada (adjacent to Mumbai), with ultra-modern CNC machines and in-house expertise. Already having two manufacturing units spread over 60 acres of land; it has a total fabrication capacity of 36000 MT/annum. The third unit is currently under expansion scheme. The plant has a battery of equipments including CNC Band SAW line, CNC Beam Drilling Line, CNC Plate Processing Line, Heavy Box Forming Line, H&I Beam Welding Line, CNC Plasma Cutting and Robot Plasma Cutting &

Heavy Engineering Unit I

Structural Steel Capacity
1500 MT/month

I SAW Pipe Capacity
1000 MT/month

Area & Manufacturing Facilities

Total Plant Area 160000 sq meters
Covered Area 12000 sq meters

Heavy Engineering Unit II

Structural Steel Capacity
1500 MT/month

Drilling Line apart from many balancing equipments for fabrication.

Unit I

Unit I is located at Kondla, Taluka Wada, District Thane, Maharashtra, off Bhiwandi Wada Highway, enroute to Ahmedabad. The plant is at 70 kms from JNPT port and 80 kms from Mumbai Port. The plant is in close proximity to Panvel, Navi Mumbai, which houses the warehouses of all major integrated steel producers.

Unit II

Unit II is also located at Wada Manor Road. The plant is at 85 kms from JNPT port and 95 kms from Mumbai Port.

Manufacturing Facilities CBS – Summary

Maximum Dimension Built	6000 mm x 6000 mm x 110000 mm
Single Unit Weight Handled	700 metric tons (open assembly area inside the plant)
Maximum Thickness	200 mm
Designing Software	Auto CAD 2000
Welding	SAW, SMAW, TIG, Argon
Material	Carbon steel, high tensile steel, stainless steel
Specifications	As per technical specifications of the client

Handling Facilities

Particulars	Location	Capacity	Quantity	Remarks
EOT	Main Plant Hall 1	10 MT	6	Owned
EOT	Main Plant Hall 1 Ancilliary Hall	10 MT	1	Owned
EOT	Fabrication Hall no 2	10 MT	1	Owned
Travelling	Fabrication Hall no 2	5 MT	2	Owned
EOT	Machine Shop - Hall 3	10 MT	1	Owned
EOT	Hall no 4	10 MT	2	Owned
Lift & Shift	Open Yard - assembly area	250 MT	-	Tie up through vendor
Lift & Shift - Hydra	Open Yard - assembly area	12 MT	10	Owned

Manufacturing Capabilities - Summary

Maximum Dimension Built

↳ Width - 7 Mtrs

↳ Depth - 2 Mtrs

↳ Length - 36 Mtrs

Single Unit Weight Handled: 160 MT

Maximum Thickness: 170 mm

Designing Software: Tekla/Autocad

Welding: SMAW/SAW/MIG & TIG

Material: Carbon Steel/High Alloy/High Tensile & Stainless Steel

Specifications: ASME/AWS